

# WordPress Block Editor: Embed Block

WordPress Training

Tutorial Contents



This tutorial is part of our series on [How To Use The WordPress Block Editor \(Gutenberg\)](#).

- To learn more about using the WordPress block editor interface, go here: [The WordPress Block Editor – Content Area](#)
- To learn more about using blocks, see this tutorial: [How To Use WordPress Block Editor Blocks](#)

\*\*\*

## Embed Block – Description

---

The *Embed block* lets you embed videos, images, tweets, audio, and content from other online services or external sources into the posts and pages of your site.

Life On The Road...

Here are the latest pics,  
vids, and tweets from  
our tour...



*All the kids were digging it!*

Add media elements to your WordPress site using the Embed block.

## How To Use The Embed Block

---

In this section, we'll cover:

- How to add an Embed block to your content.
- How to edit and configure your Embed block and block settings.
- How to remove the Embed block from your content.

For more details on using blocks (e.g. how to move blocks around your content), see this tutorial: [How To Use Blocks](#).

## Adding An Embed Block

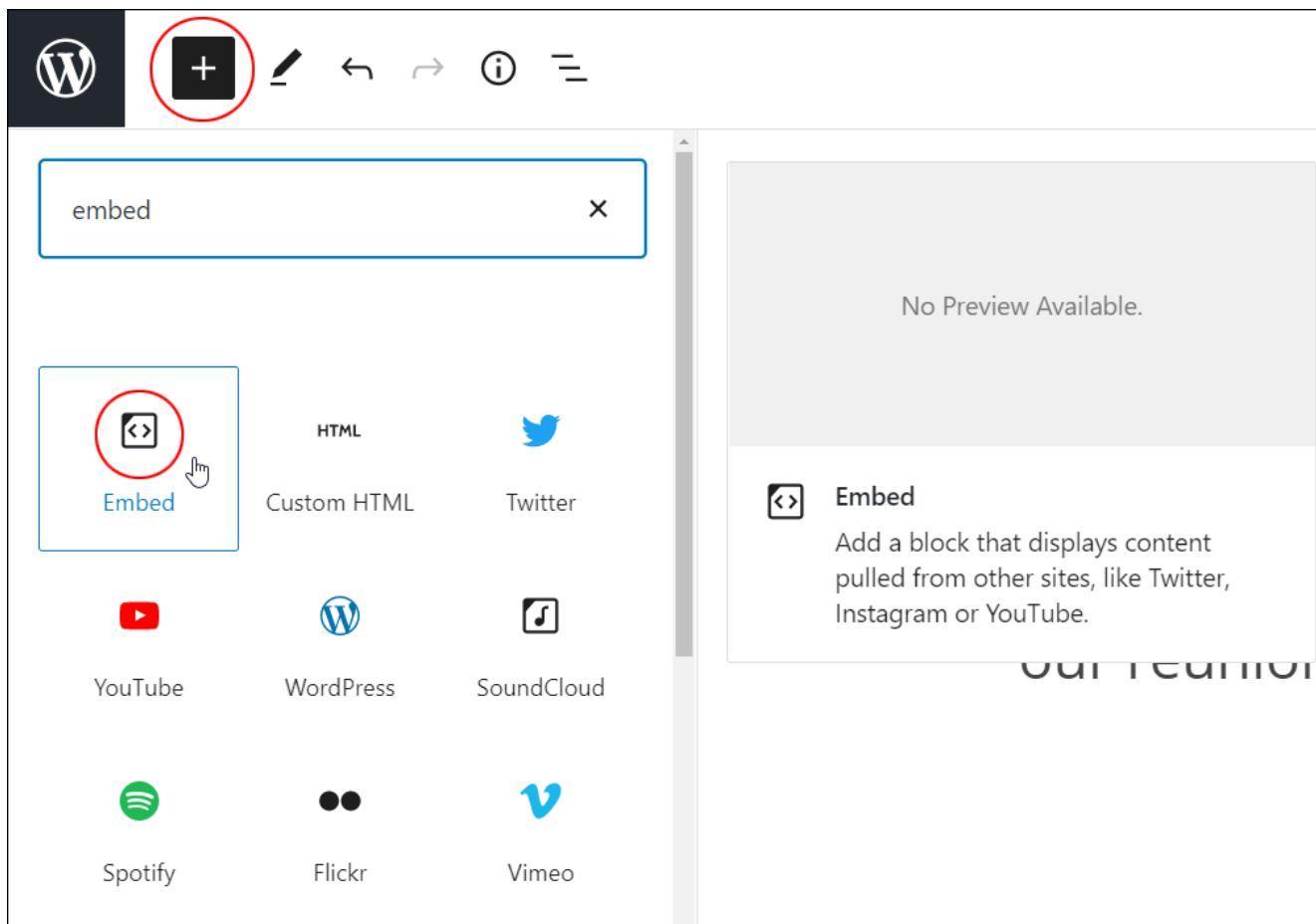
To add an *Embed block*:

- Either:
  - Click on the 'Add Block' tool in the **Editing Toolbar** section and select the Embed block (in *Most Used* or *Embeds* section),
  - Add the Embed block in the **Content Area**.
- Add or paste in your Embed URL.
- Use the tools in the *Embed Block Editor* or *Block Settings* section to align, edit, or configure your media elements.

Let's go through the above steps.

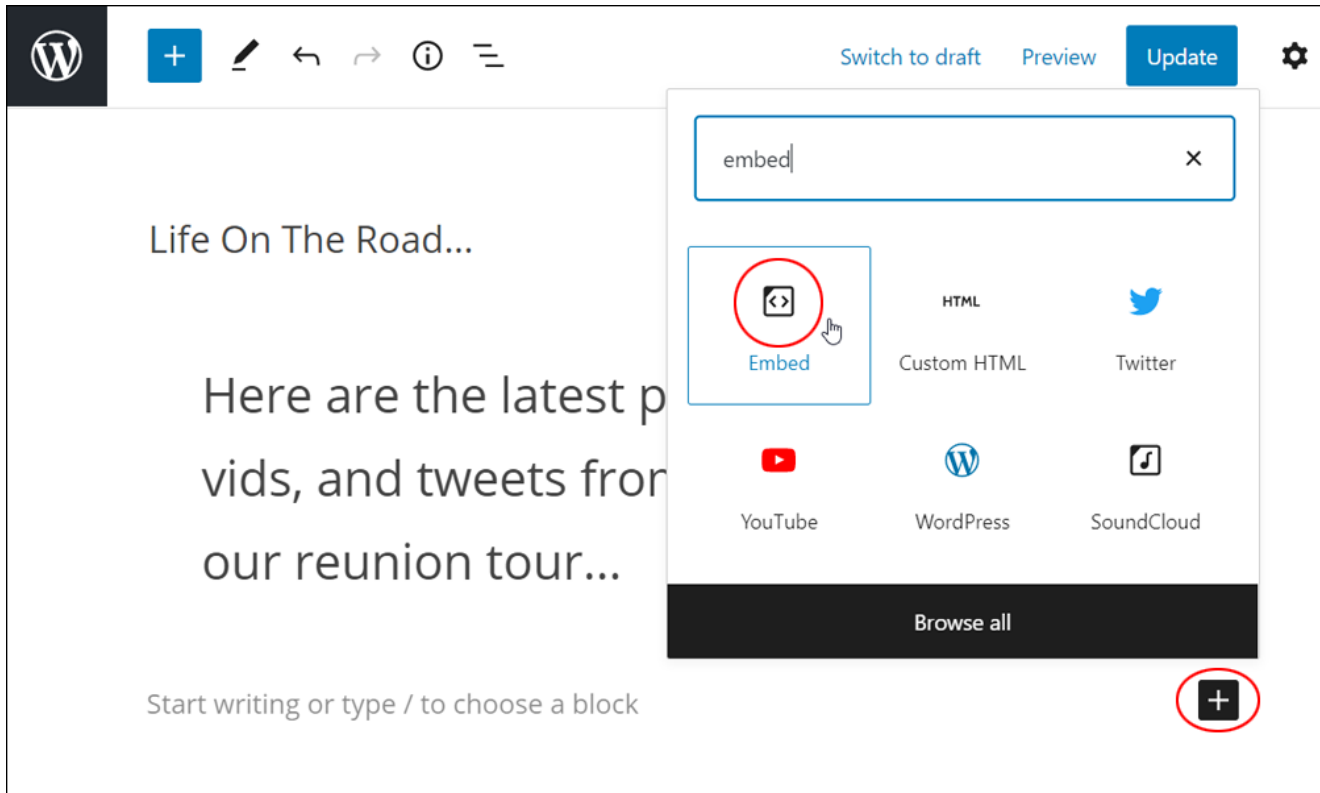
First, create a new post or page or open an existing post or page and either:

Click on the Add Block tool and select an Embed block...



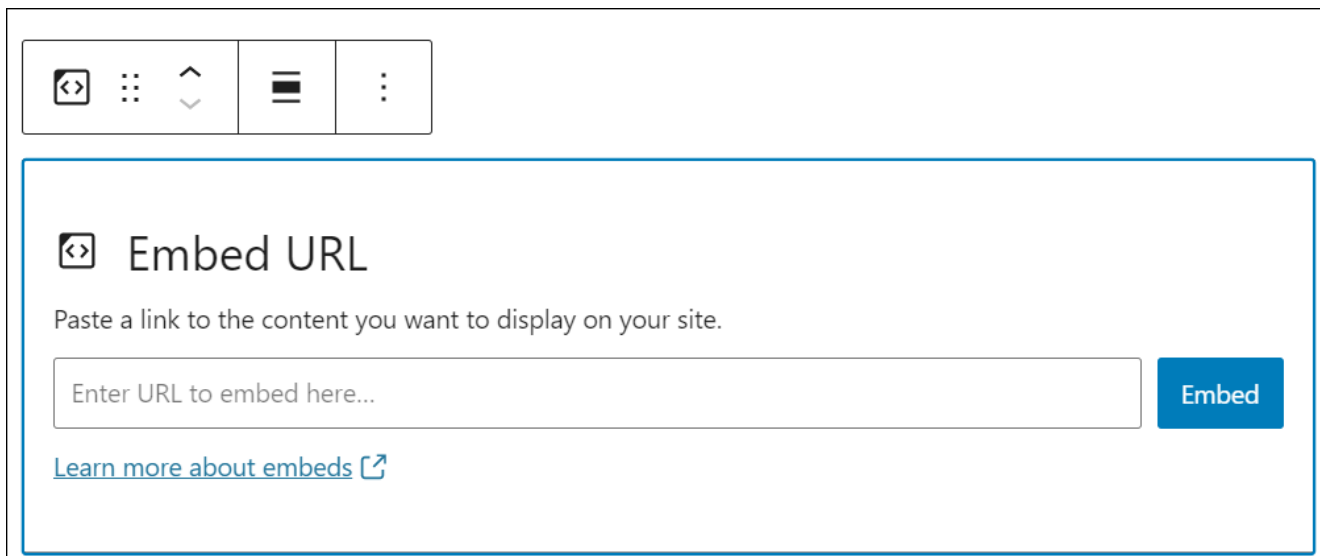
Use the Add Block tool to insert an Embed block into your posts or pages.

Or, select an Embed block using the **Insert tool** in the Content Area.



Add an Embed block to your content using the Inserter tool.

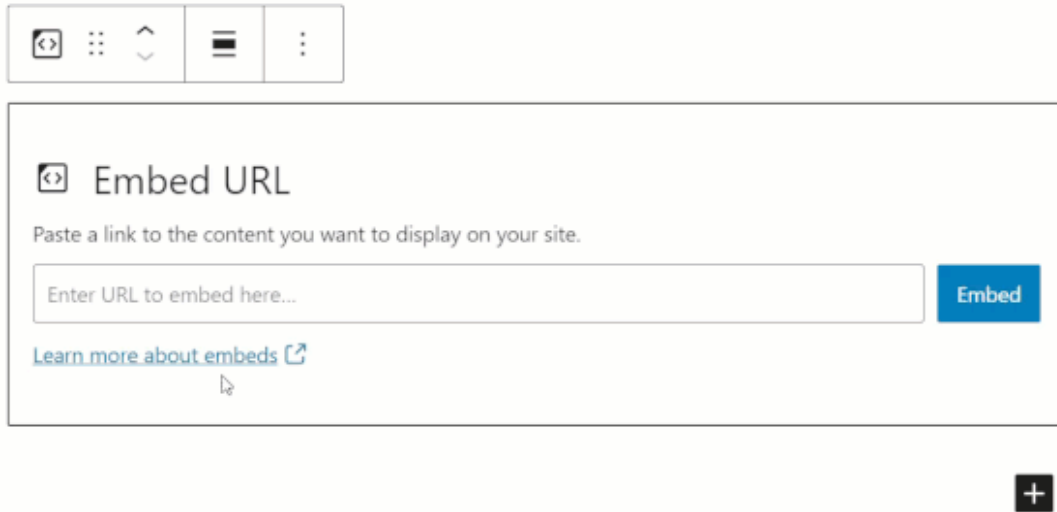
Either of the above methods will insert an Embed block into your content.



Embed block (no media embedded yet).

After adding an Embed block, you can:

- Add a link to the content you want to embed and display on your site.
- Edit and configure block settings,
- Save, publish, or update your post or page.



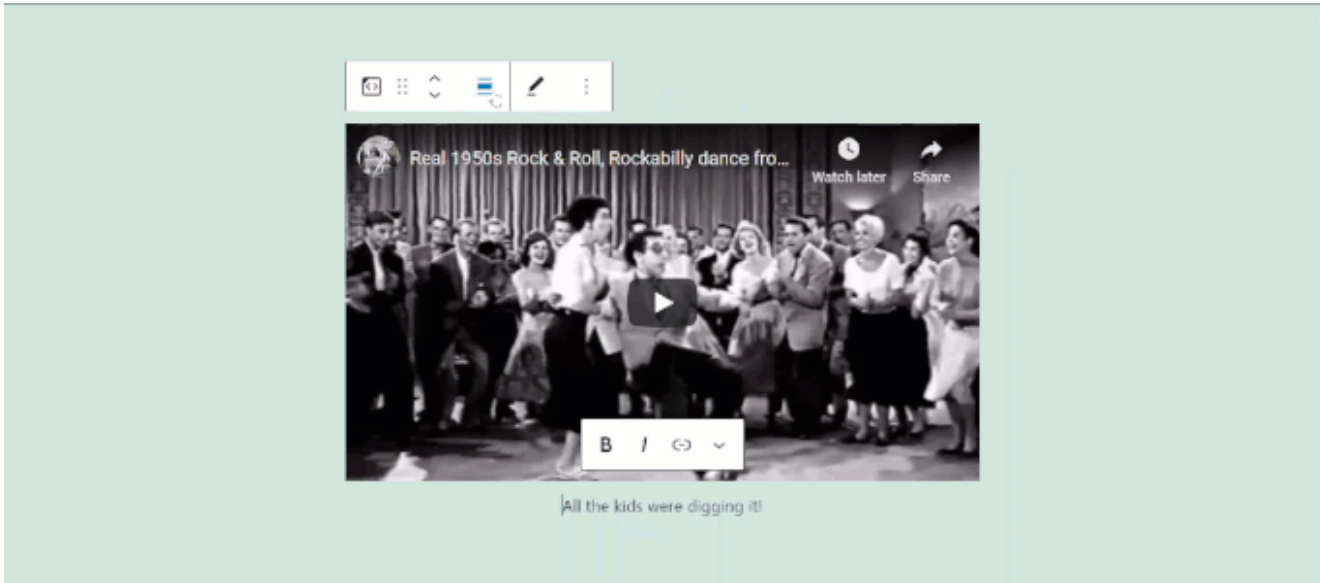
Add a link to embed content into the block.

## How To Edit An Embed Block

---

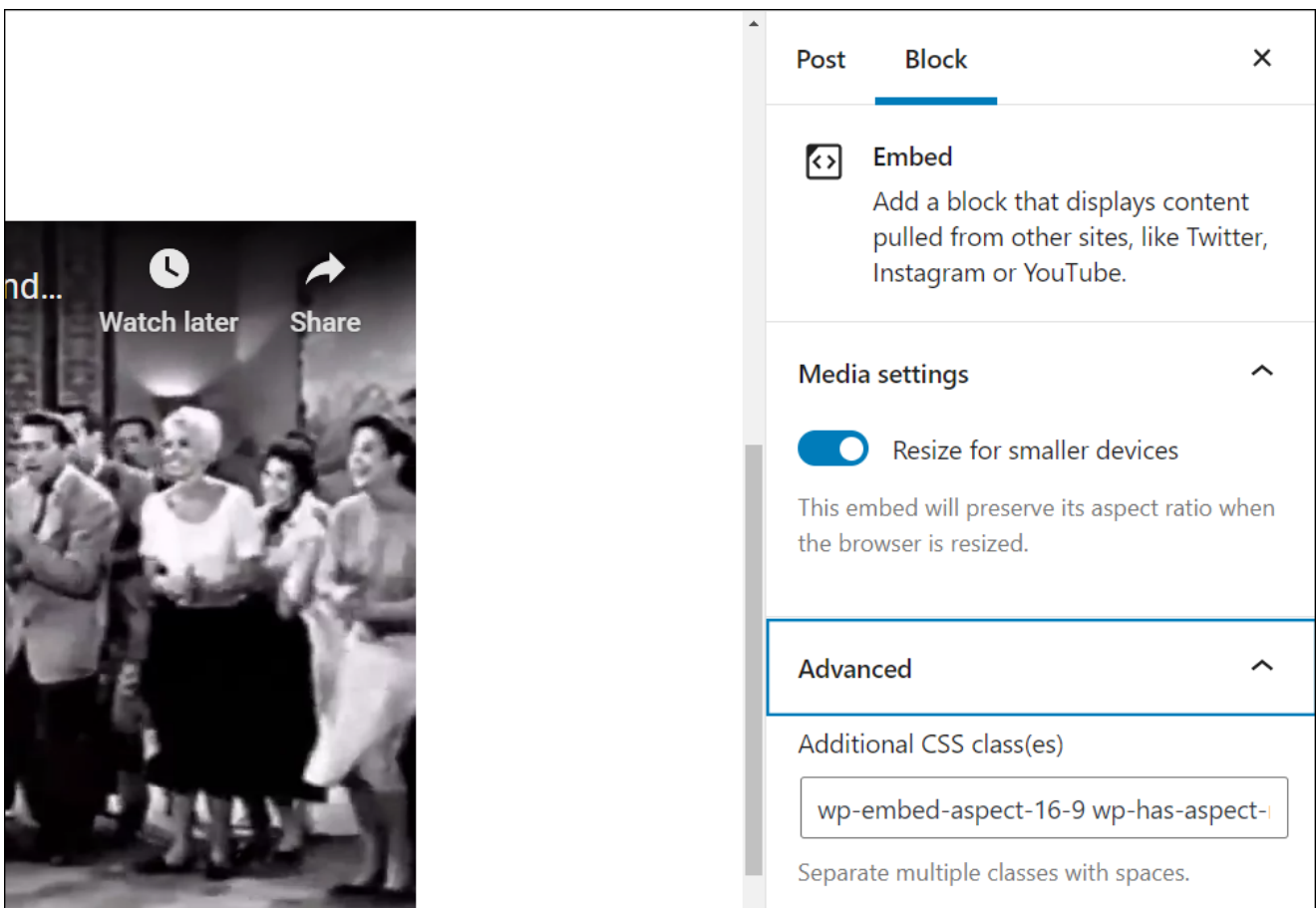
To edit an Embed block:

- Click inside the Embed block to select it.
- Use the *Block Editor* tools to:
  - Change block alignment (align media left, right, and center. Also, make embedded media wide width or full width).
  - Edit the embed URL.
  - Format caption text (e.g. bold, italics, etc.).
  - Add a hyperlink to the embed caption.
- Use the *Block Settings* to configure any additional settings for your embedded content.



Embed block editor.

The block's Media settings let you turn the option of resizing your embedded content for smaller devices on or off. This preserves the aspect ratio of your content when the user's browser is resized.



Embed block – Settings.

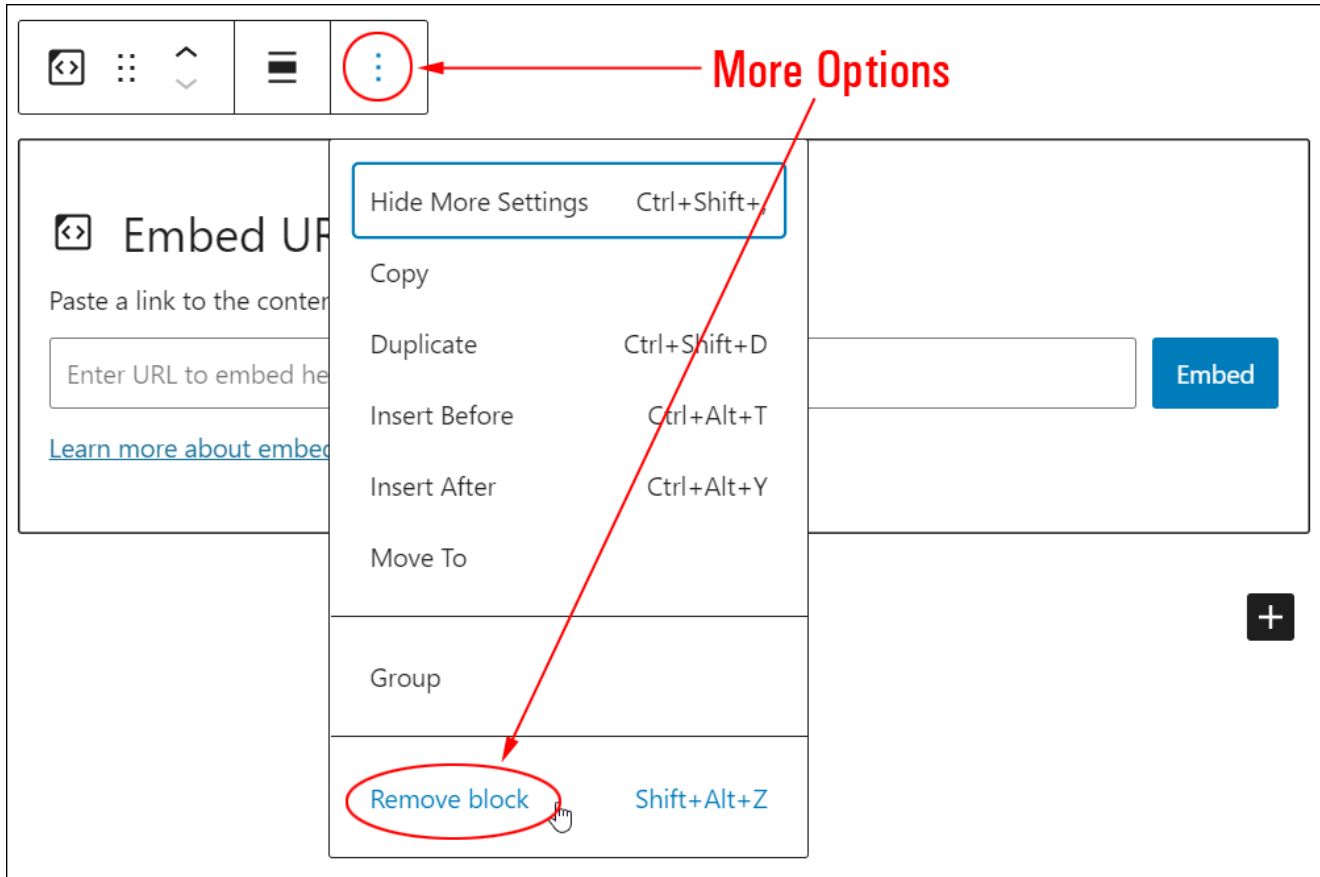
Remember to update and publish your post or page to save your settings.

## How To Remove An Embed Block

---

To delete or remove an Embed block:

- Click inside the Embed block to select it.
- Select the 'More Options' tool in the Block Editor.
- Click on 'Remove Block'.
- The Embed block will be removed from your post or page.



Use the More Options menu to remove an Embed block from your content.

*Additionally...*

- You can reposition your block using the 'Move Up' and 'Move Down' arrows or the Drag and Drop handle tool (if you need help with this step, see our tutorial on [How To Use Blocks](#)).
- You can also convert an Embed block into a [Reusable block](#).

## Embed Block Tools, Options & Settings

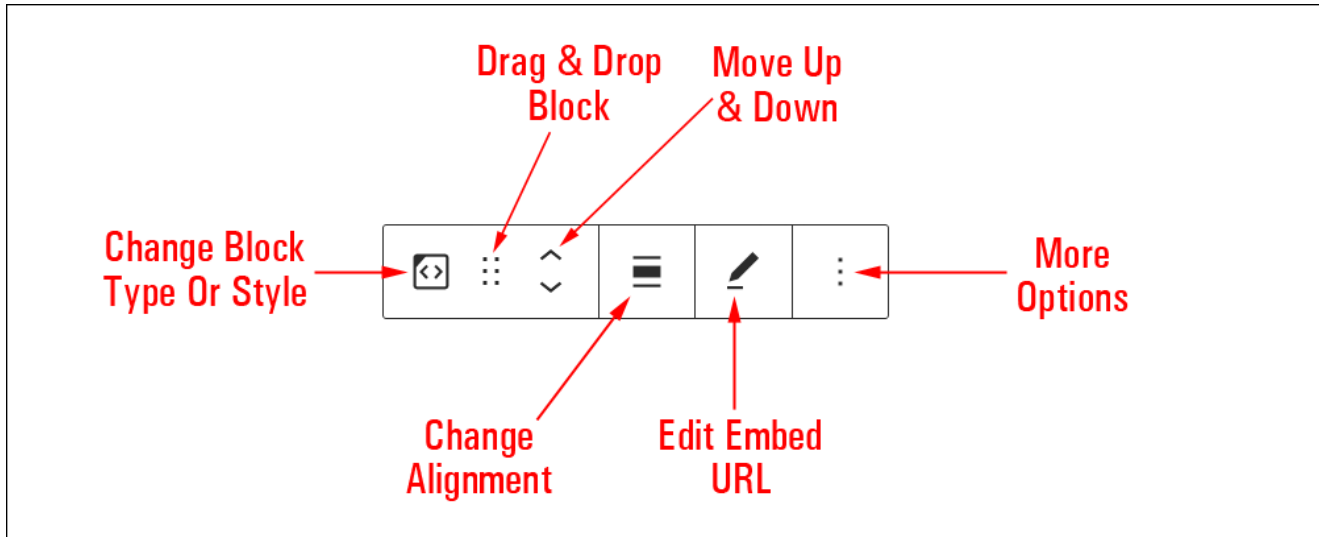
---

The *Embed block* includes tools, options, and settings for:

- Embed Block Editor
- Embed Block Settings

## Embed Block Editor

---



Embed block editor.

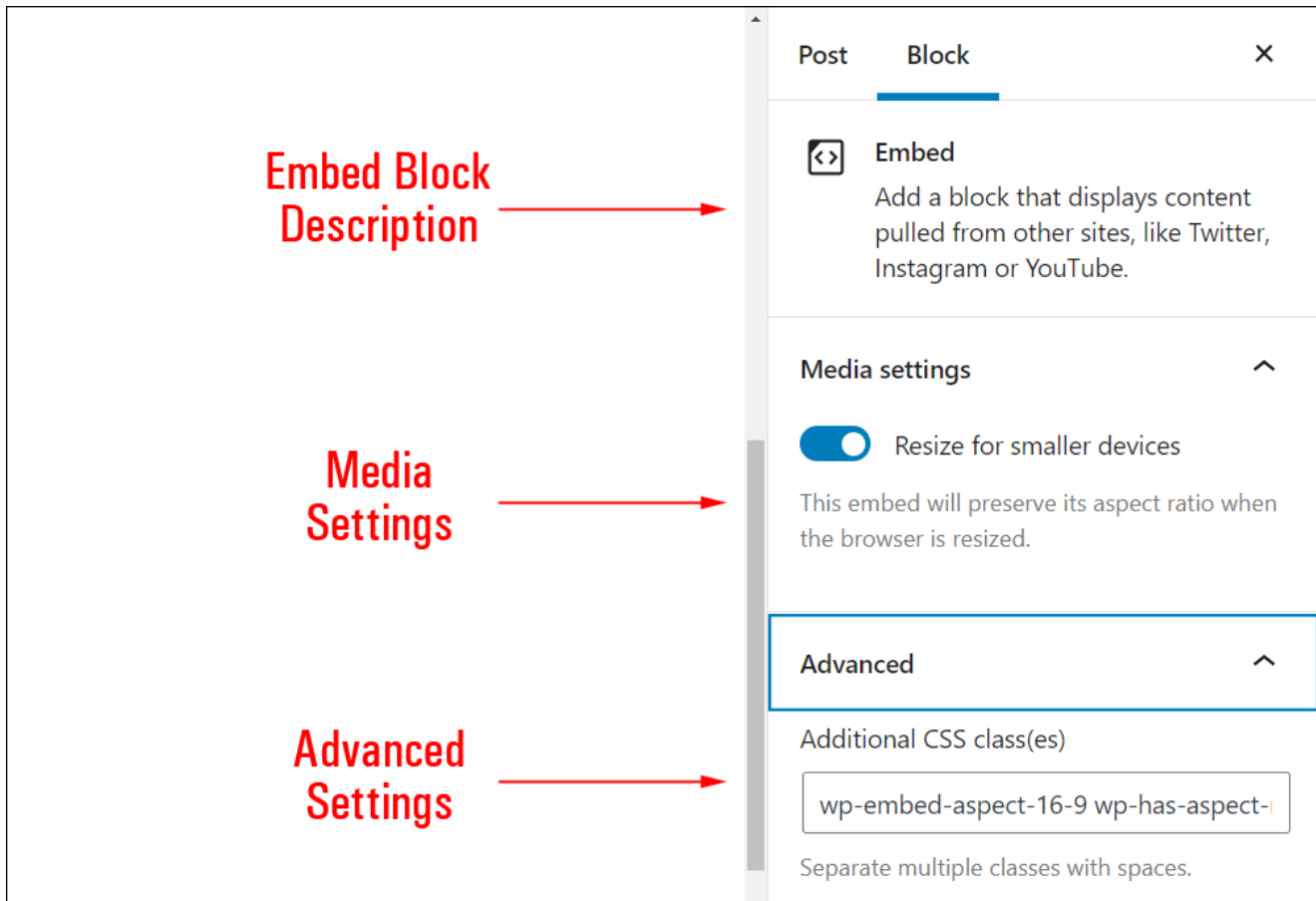
The *Embed Block Editor* includes tools that let you perform the following operations:

- **Display Block Type** (See ‘*Embed Block – Additional Info*’ section below.)
- **Drag & Drop Tool**
- **Move Up and Down Tool**
- **Change Alignment**
  - Align left
  - Align center
  - Align right
  - Wide width – wide-aligned embedded media sticks out on either side of normal content.
  - Full width – stretches embedded media to cover the entire width of the browser window (normal content remains within margins on either side).
- **Edit Embed URL**
- **More Options** – See [How To Use Blocks](#) to learn how to use this section.

## Embed Block Settings

---





Embed block settings.

Embed Block settings include:

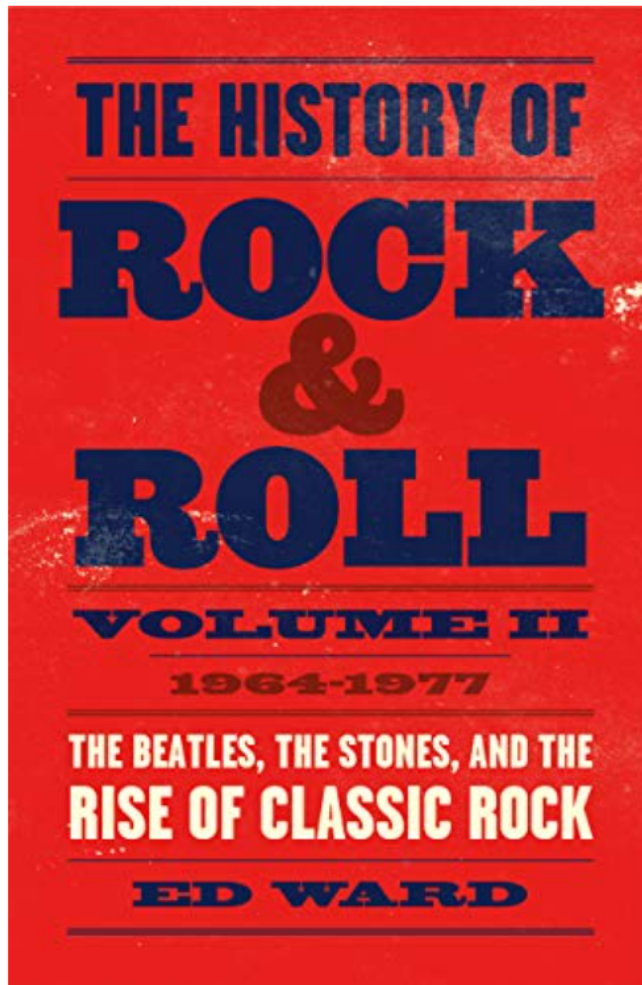
- **Block description area**
- **Media Settings**  
*Resize for smaller devices* – enable to preserve the aspect ratio of embedded content when the browser is resized.
- **Advanced Settings**  
*Additional CSS Class(es)* – This field lets you add multiple CSS classes to your block separated with spaces. This allows you to write custom CSS and style the block as you see fit. Note: This requires having knowledge of CSS (Cascading Style Sheets).

## Embed Block – Additional Info

---

### Supported WordPress Embeds

---



[BUY ON AMAZON](#)

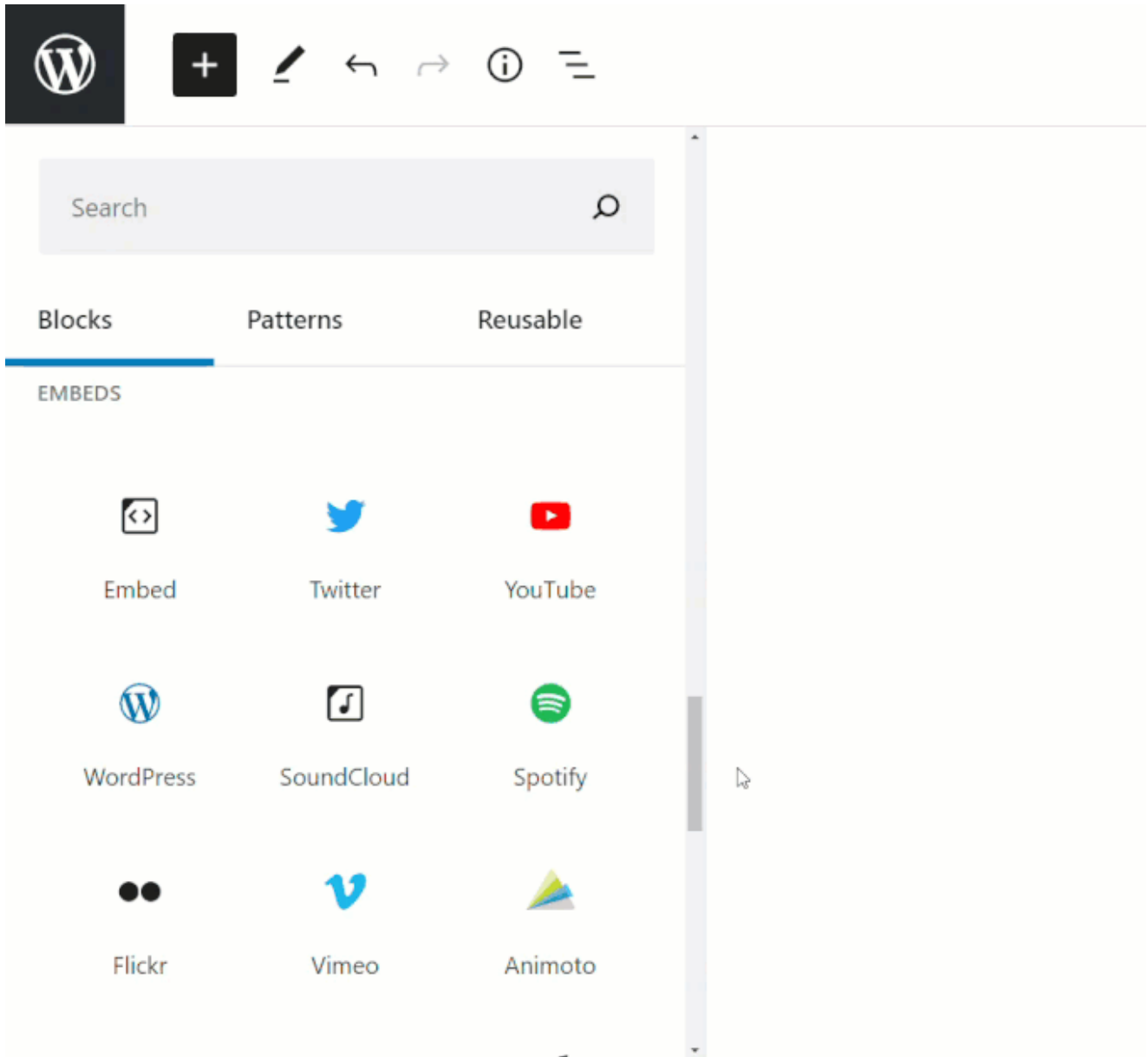
[SHARE](#)

[FREE PREVIEW >](#)

*Buy the book!*

Embed blocks let you embed content from different platforms into your site.

WordPress currently supports embedding content from many third-party platforms, including:



Embed content from many 3rd party platforms using embed block.

Use the embed blocks from the platforms listed above, or try adding the content using the general Embed block described in this tutorial.



You cannot embed links from platforms that WordPress does not support.

The screenshot shows the 'Embed URL' interface. At the top, there is a toolbar with icons for code, list, undo, and redo. Below the toolbar, the title 'Embed URL' is followed by the instruction 'Paste a link to the content you want to display on your site.' A text input field contains the URL 'https://media.giphy.com/media/3o7btZ1pMda4to9zR6/giphy.gif'. To the right of the input field is a blue 'Embed' button. Below the input field is a link 'Learn more about embeds' with an external link icon. A yellow highlighted error message reads 'Sorry, this content could not be embedded.' Below the error message are two buttons: 'Try again' and 'Convert to link'. A red arrow points from the error message to the URL input field, and the text 'This content link is unsupported!' is written in red next to the arrow.

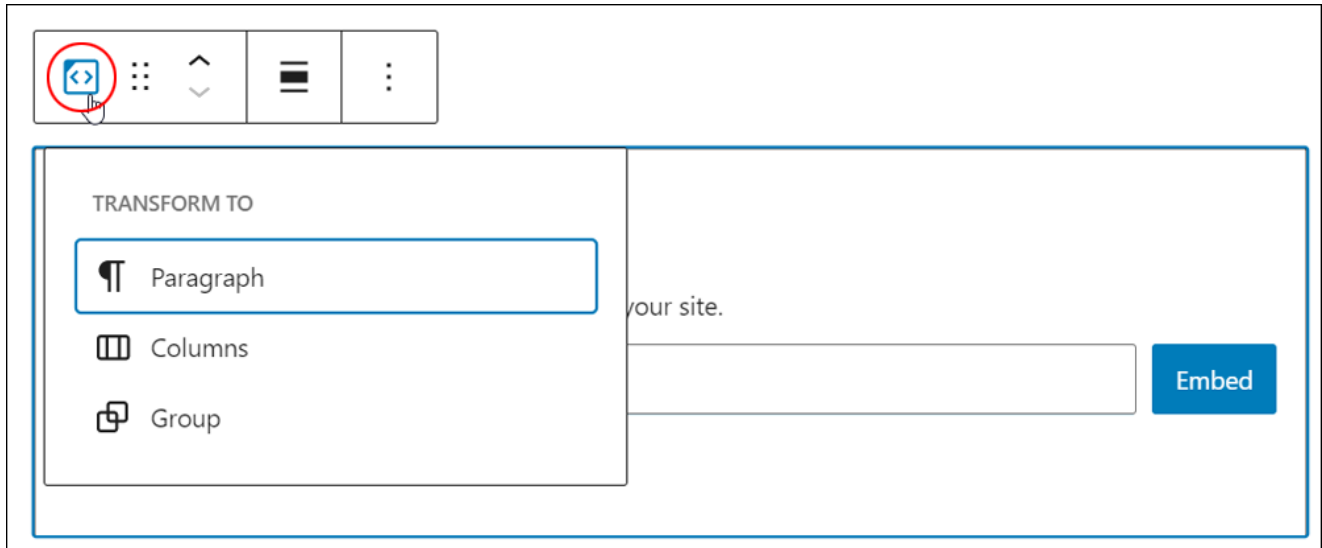
Unsupported platform link.

If you try to add a link from an unsupported platform, you will get the message “*Sorry, this content could not be embedded.*” and the option to try again, or convert the unsupported content into a link.

This screenshot is identical to the one above, showing the 'Embed URL' interface with the same URL and error message. However, the error message 'Sorry, this content could not be embedded.' is no longer highlighted in yellow. A mouse cursor is visible at the bottom of the 'Try again' button.

Try again or convert the content into a link.

You can convert an *Embed* block into the following block types:



Change the Embed block into other block types.

*Additionally:*

Installing **plugins** or **themes** on your site may also add new functionality, options, or settings to an Embed block.

Life On The Road...

Here are the latest pics,  
vids, and tweets from  
our tour...



*All the kids were digging it!*

Use the Embed block to embed media and other files into your posts and pages.

Congratulations! Now you know how to use the WordPress content editor's **Embed block**.

To learn how to use other blocks, go here: [\*\*WordPress Block Editor – How To Use Blocks\*\*](#)

\*\*\*

Updated: April 8th, 2023