

# WordPress Block Editor – Block Settings

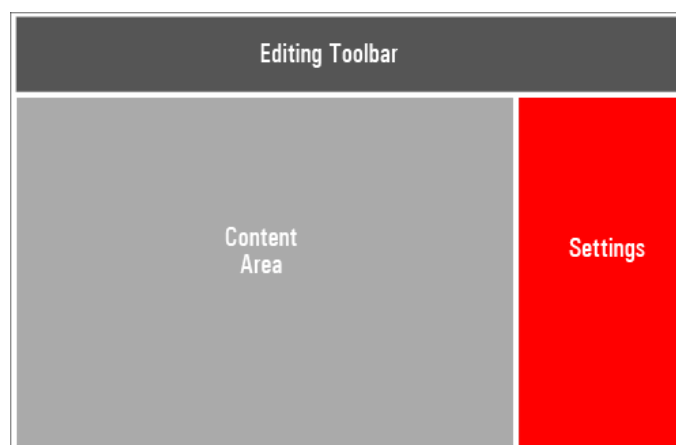
[wptrainingmanual.com/wordpress-tutorials/block-settings](https://wptrainingmanual.com/wordpress-tutorials/block-settings)

March 19, 2023

# WordPress Block Editor: Block Settings

WordPress Training

## Tutorial Contents



This tutorial is part of our series on [How To Use The WordPress Block Editor \(Gutenberg\)](#) and expands on the [Block Editor's Settings Section](#) tutorial.

In this tutorial, you will learn how to use **Common Block Settings** and their various properties inside the WordPress block editor.

For a complete understanding of how to use the WordPress Block Editor, see the other tutorials in this series:

- [How To Use WordPress Blocks](#)
- [How To Use The WordPress Block Editor Content Area](#)
- [How To Use The WordPress Block Editing Toolbar](#)
- [How To Use The WordPress Block Settings Section](#)

\*\*\*

## How To Get To The Block Editor Settings Section

---

When you create a new post or page in WordPress, the Block Settings panel is hidden from view.



The Block Editor panel does not display by default when you create a new post or page in WordPress.

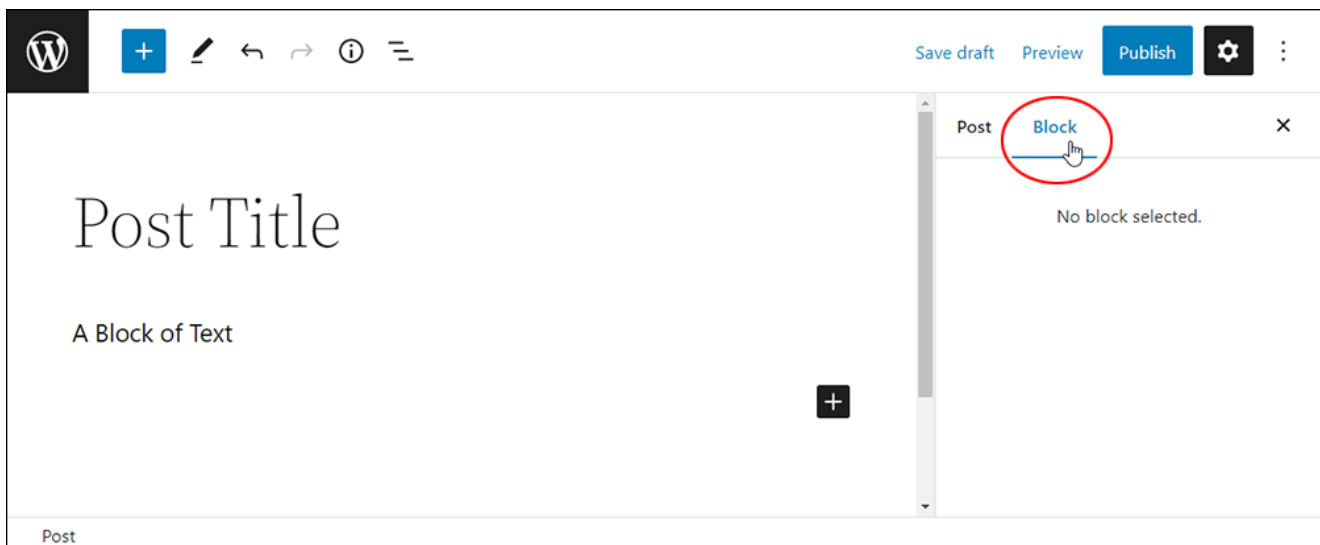
To access the Block Editor Settings section, click on the gear icon on the top-right-hand side of your screen...



Click on the gear icon to view the Settings section.

Next, select the **Block** tab in the Settings section.

Note that if you have not selected a block to work on, a “No block selected” message will display in the Block Settings panel area.



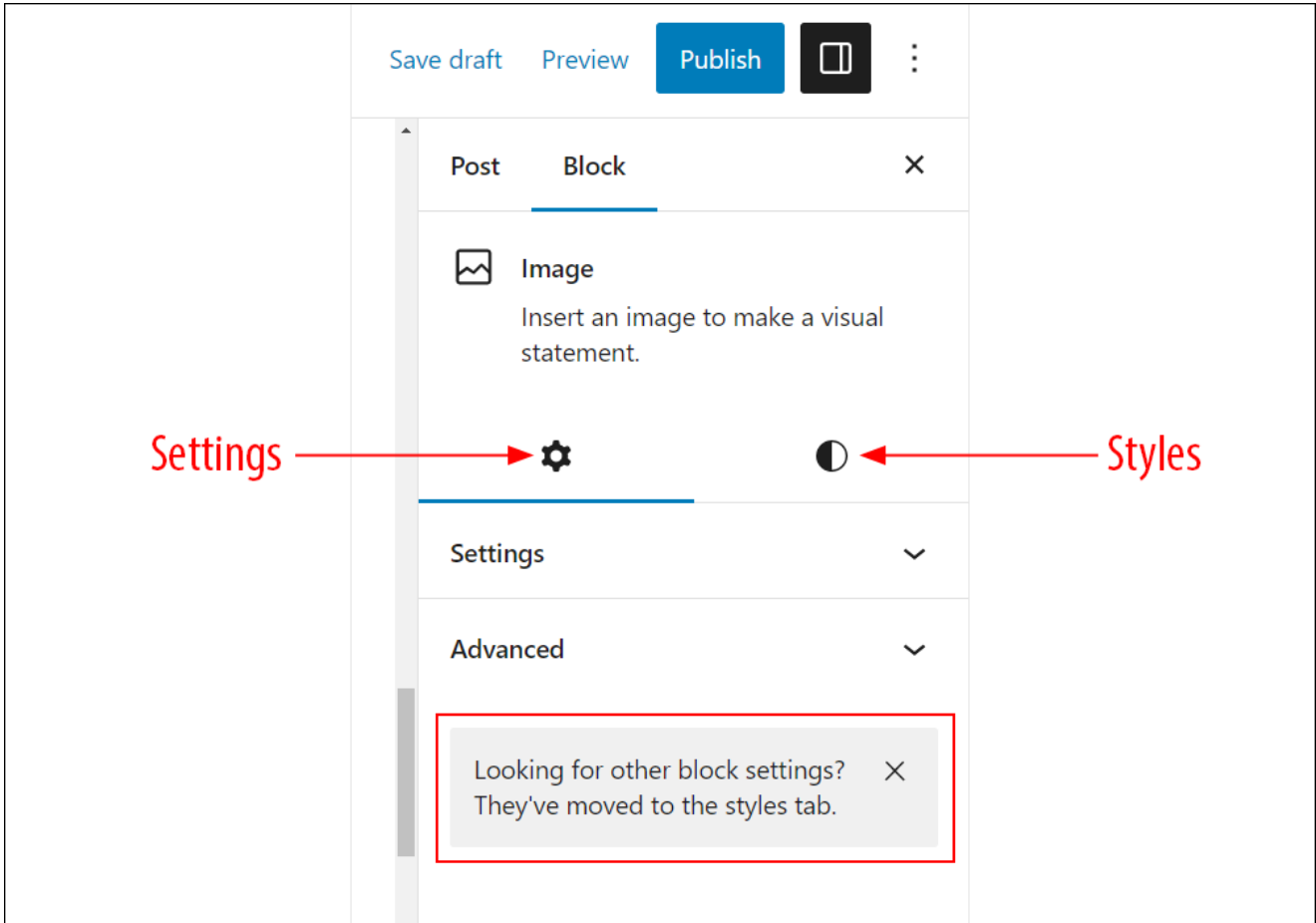
You must select a block to view its settings in the Block Settings panel.

Selecting a block in the Content Area displays the Block Settings for that block with all of its options and properties.

The screenshot displays the WordPress Gutenberg editor interface. At the top, there is a navigation bar with the WordPress logo, a plus sign for adding blocks, and icons for undo, redo, help, and a menu. On the right side of the navigation bar, there are buttons for "Save draft", "Preview", "Publish", and a settings gear icon. The main editing area contains a "Post Title" field with the text "Post Title" and a rich text editor toolbar with icons for paragraph, list, bold, italic, link, and more options. Below the title is a text block containing "A Block of Text". On the right side, the "Block Settings" panel is open, showing the "Paragraph" block selected. The panel includes sections for "Color" (Text, Background, Link), "Typography" (SIZE DEFAULT, S, M, L, XL), "Dimensions", and "Advanced". A red box highlights the Block Settings panel.

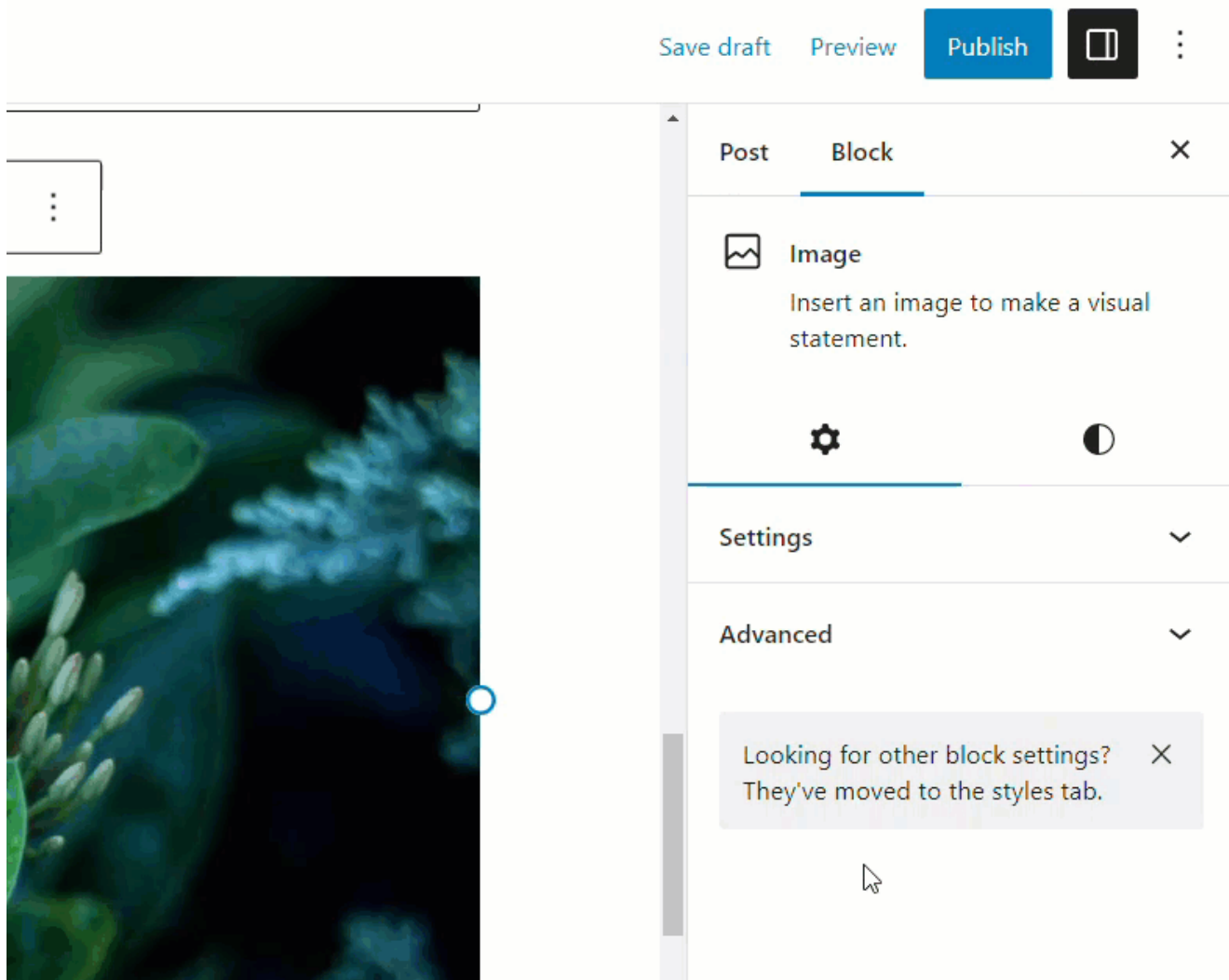
Select a block to view the block's settings in the Block Settings panel.

Note: In **version 6.2**, WordPress introduced separate tabs for Settings and Styles.



Settings and Styles tabs

Keep this in mind as you go through the different block settings options.



WordPress has moved some block settings to the Styles tab.

## Common Block Settings

As many blocks in the WordPress block editor use the same block settings (e.g. Color settings, Typography settings, etc.), we have created separate tutorials below covering each of these common block settings with a description of their available properties and how to configure these.

Click on a tutorial from the list below to learn about using common block settings in the WordPress block editor.

For more tutorials about using the block editor, go here:

\*\*\*

Updated: April 12th, 2023

